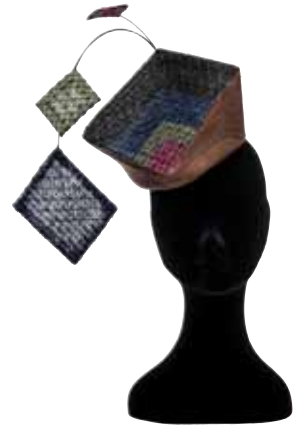




# So, they're getting married



*Milliner Heather Ogilvie shares her tips on how to find the right hat and feel amazing wearing it*

**H**ow a hat makes you feel is what a hat is all about," suggests Philip Treacy, and who wouldn't agree, but how to find the hat that makes you feel sensational?

Ever thought "I don't like hats", "I don't suit hats" or "Love hats, but I'm not sure what suits me?" Then, read on...

## FACE SHAPE - FEATURES

'Indicators' guide what shape and size might suit you, but don't be a slave to these; I've known many occasions when a fantastic look is achieved wearing something breaking all the 'rules'. Go with an open mind, a good friend and find somewhere to try on anything and offer advice – you will discover a hat that you love and have fun in the process.

## IS YOUR FACE...

**Round** - round hairline and chin, full cheeks youthful look? Avoid round combinations. Add angles, a headpiece/saucer shape worn to the side of the head, perhaps an asymmetric crown or brim, or a hat with a symmetrical brim worn at an angle.

**Square** - short and angular with a wide jawline? Length and width about equal – take care with angles; try hats that have rounded, soft lines and provide height.

**Oblong** - longer than it is wide, high forehead, tending to a square jawline? Avoid tall, narrow shapes and high crowns and go for full, flared or upward brims.

**Heart-shaped** - broad forehead,

***'I've known many occasions when a fantastic look is achieved wearing something breaking all the 'rules''***

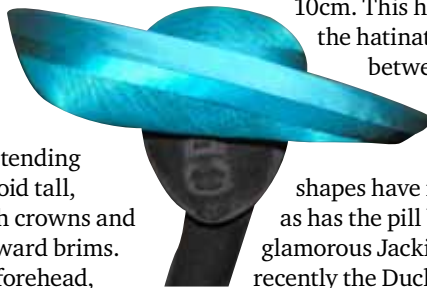
wide cheekbones, narrow jawline and chin? Avoid shapes that are wide at the forehead, otherwise you'll suit most styles.

**Oval** – egg-like. Broader cheeks, slightly narrower forehead and jaw line? The perfect shape for most hats, so just try them on.

**How to wear:** Unless a Jackie Onassis pill box, don't wear your hat on the back of your head. The hat measurement (average 57cm) is taken around the back of the head across the top of the ears and just above the eyebrows and this is where the hat is designed to sit, fairly square on (tilt to try a jaunty angle). Most perch styles are designed to be worn forward over the right eyebrow.

**Trends:** A hat, hatinator, fascinator? What shape? What colour? The short answer is whatever you find you love.

Fascinators have become less popular since changes to The Royal Ascot hat code state a hat base must be at least 10cm. This has given rise to the hatinator – a headpiece between a hat and a fascinator. Large brims and traditional boater shapes have made a comeback, as has the pill box hat worn by the glamorous Jackie Onassis and more recently the Duchess of Cambridge.



**Colour:** Trends are powdery blues, greens and apricots; stronger tones of lime, red and orange contrasting with darker tones of purple, brown and olive. Classic mother of the bride or groom perennials include ivory, navy, dove grey and kingfisher blue.

Try not to complicate - if your outfit is ornate, keep the hat simple. If your outfit is simple, less fussy, keep the classic look with a classic style hat or add a bit of frivolity with an adventurous piece. Accessories, handbag and shoes in the same colour can provide a classic look.

## BUYING/HIRING OPTIONS

**Hiring:** Cost effective.

**Ready made:** From department stores or boutiques.

**Bespoke:** Designed and made just for you. A milliner spends time with you, ensuring your hat is not only perfect for you and your outfit, but also that it's secure and fits you perfectly. This is particularly helpful if you don't have an average-sized head, as hire and ready made hats are generally made to the average size. ♦

To find out more contact Heather on 07722 797755 or visit [heatherogilvie.co.uk](http://heatherogilvie.co.uk)

**Top:** Hats for round and square faces  
**Left and below:** For oblong and heart-shaped faces



## HOW TO GET AHEAD...

**Glasses:** Take care with front features to avoid looking too busy.

**Brim width:** The guide is not to wear a brim wider than your shoulders, or if you're short... but this might be one to break, so try it!

**Hair style:** So important. Think about how you'll wear it before you choose your hat. Take your hat to your hairdresser for a practice run.

**Accessibility:** You'll embrace a lot of people - large brims can

get in the way and cast a shadow over your face for the photographs

**Wedding type:** Think about the style and setting. Will it be relatively formal or informal?